

Resource Guide

Head Start & Early Head Start Programs of
CCCCC, Inc



Serving Clay, Cloud, Ottawa, Republic, & Washington Counties

LEGAL ASSISTANCE.....	4
<i>Kansas Legal Services.....</i>	<i>4</i>
<i>Kansas Lawyer Referral Program</i>	<i>4</i>
<i>Online Registered Offender Search for Kansas.....</i>	<i>4</i>
<i>United States Department of Justice National Sex Offender Public Website (nsopw.gov).....</i>	<i>4</i>
<i>CASA.....</i>	<i>4</i>
<i>Sunflower Childrens Collective</i>	<i>4</i>
<i>Law Firms & Attorney’s</i>	<i>4</i>
Support Services for Families	5
<i>DOMESTIC VILENCE/SEXUAL ASSAULT</i>	<i>5</i>
<i>The Crisis Center, Inc.</i>	<i>5</i>
<i>Domestic Violence Association of Central Kansas</i>	<i>5</i>
<i>Help/Crisis Lines</i>	<i>6</i>
<i>New Hope Ministries.....</i>	<i>6</i>
MENTAL HEALTH SERVICES	6
<i>Central Kansas Mental Health Center</i>	<i>6</i>
<i>Pawnee Mental Health.....</i>	<i>6</i>
<i>Cornerstone Family Counseling CenterKerr's Counseling</i>	<i>7</i>
<i>The K-State Family CenterStillwell Counseling</i>	<i>7</i>
MEDICAL SERVICES AND INSURANCE	8
<i>KanCare.....</i>	<i>8</i>
<i>Customer Service Hotlines:</i>	<i>8</i>
<i>Transportation Services.....</i>	<i>8</i>
<i>KanCare Ombudsman:</i>	<i>8</i>
<i>Health Departments</i>	<i>8</i>
<i>Doctors.....</i>	<i>9</i>
<i>Community Health Centers.....</i>	<i>10</i>
<i>Hospitals.....</i>	<i>10</i>
<i>See To Learn Program</i>	<i>11</i>
<i>Lions Club International.....</i>	<i>11</i>
<i>Dentists.....</i>	<i>11</i>
DISABILITY SERVICES.....	12
<i>Community Developmental Disability Organizations</i>	<i>12</i>
<i>Infant Toddler Services (Part C)</i>	<i>12</i>
Other Developmental Assistance Organizations	13
EDUCATIONAL SERVICES.....	13
<i>Adult Education.....</i>	<i>13</i>

<i>Preschools</i>	14
<i>Head Start</i>	14
<i>Parents as Teachers</i>	15
<i>School Districts</i>	15
HOUSING SERVICES	17
<i>Low-income Housing Units</i>	17
LIBRARIES	19
GENERAL PUBLIC TRANSPORTATION	19
SWIMMING POOLS	19
AFTER SCHOOL PROGRAMS	20
RECREATION PROGRAMS	20
K-STATE RESEARCH AND EXTENSION	20
THRIFT STORES	21
FOOD, FINANCIAL, AND EMERGENCY RESOURCES	21
<i>Beloit Ministerial Association</i>	23
EMPLOYMENT RESOURCES	24
PARENTING/PREGNANCY RESOURCES	25
SUBSTANCE ABUSE RESOURCES	26

LEGAL ASSISTANCE

Kansas Legal Services

712 S. Kansas Ave, Suite 200, Topeka, KS 66603

Phone :785-233-2068

Call toll-free to apply for services at 1-800-723-6953 from 7:30am to 5:00pm Monday-Friday or you can apply online at www.kansaslegalservices.org.

Statewide non-profit organization providing legal services for qualifying individuals. Assistance with consumer/finance, education, elder law, employment, family, health, housing, juvenile, income maintenance, Indian law, and individual rights issues. Legal advice, mediation, and information lines are available. Offices are located throughout Kansas.

Kansas Lawyer Referral Program

You must fill out the online form. <https://ksbar.org/?pg=clientReferrals>

Online Registered Offender Search for Kansas

<https://kdocrepository.doc.ks.gov/kasper/>

www.kbi.ks.gov/registeredoffender/

[United States Department of Justice National Sex Offender Public Website \(nsopw.gov\)](http://www.nsopw.gov)

<https://www.nspow.gov>

CASA

CASA workers are court-appointed volunteers who serve as advocates for children in legal proceedings. They make recommendations to the court to support the best interest of the child.

Cloud County	910 W. 11 th , Concordia, KS 66901	785-243-8200
Ottawa County	155 N. Oakdale, Salina, KS 67401	785-825-4493
Republic County	910 W. 11 th , Concordia, KS 66901	785-243-8200
Washington County	910 W. 11 th , Concordia, KS 66901	785-243-8200

Sunflower Childrens Collective

Clay County - The Sunflower Children's Collective is the umbrella organization for Sunflower CASA, Stepping Stones CAC, and Sunflower Bridge CEVC

323 Poyntz Ave., Suite 101, Manhattan, KS 66502

Phone: 785-205-2970

Email: katiem@sunflowerchildrensco.org

Law Firms & Attorney's

Clay Co.

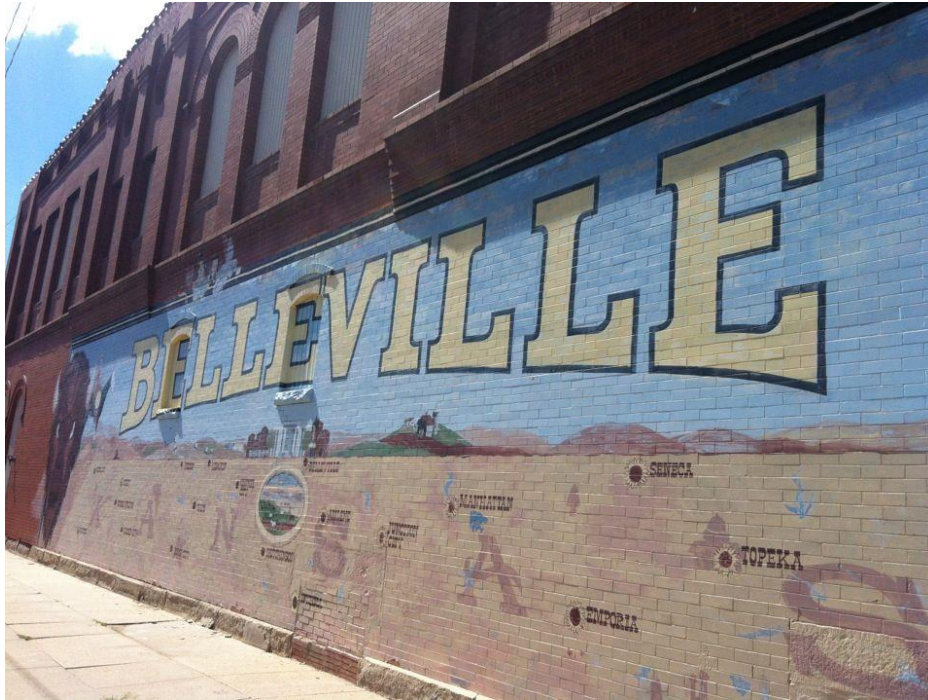
Ryan and Mullin PA 610 5th Street Clay Center 785-632-5666

Aaron Westbrook 436 Lincoln Ave, Clay Center 785-789-9539

Cloud Co.

Condray and Thompson, LLC 812 Washington, Concordia 785-243-1357

Ottawa Co.		
Allen and Associates	212 N. Concord, Minneapolis	785-392-2105
Barefield Law Offices	205 W. 2 nd , Minneapolis	785-392-2133
Steven Lee	513 Elm St, Minneapolis	785-392-3444
Republic Co.		
Thompson and Thompson	310 4 th St, Scandia	785-335-2248
Washington Co.		



Support Services for Families

DOMESTIC VILENCE/SEXUAL ASSAULT

[The Crisis Center, Inc.](#)

Confidential, free services for victims of domestic violence and sexual assault in Clay, Geary, Marshall, Pottawatomie, and Riley counties. Services offered: 24-hour hotlines, 24-hour crisis intervention, safe shelter, advocacy, referrals, children's services, support groups for women and children, supportive counseling, and assistance with protection orders. They also provide community education.

24 Hour Crisis Line: 1-800-727-2785

[Domestic Violence Association of Central Kansas](#)

Confidential, free services for victims of domestic violence, sexual assault, teen dating violence, stalking, and elder abuse. DVACK serves Saline, Dickinson, Ellsworth, Mitchell, Cloud, Ottawa, Jewell, Lincoln, Republic, and Washington counties. Services offered: 24-hour hotline, emotional support and

understanding, crisis counseling, safety planning, emergency transportation, safe shelter, information and referrals, civil and criminal court advocacy, assistance with protection from abuse/stalking orders, economic/housing advocacy, Hopeline and 911 phones, support groups, teen dating violence prevention, and adolescent services.

24 Hour Hotline: 1-800-874-1499

Salina office: 785-827-5862
(Saline, Dickinson, and Ottawa counties)

Concordia office: 785-243-4349
(Cloud, Mitchell, Ottawa, Lincoln, Republic, and Washington counties)

Manhattan office: 785-539-7935
(Clay, Geary, Marshall, Pottawatomie, Riley counties)

Help/Crisis Lines

Domestic Violence Crisis Line: 1-888-END-ABUSE
Self-Help Network: 1-800-445-0116
National Resource on Domestic Violence: 1-800-537-2238

New Hope Ministries

New Hope Ministries is a faith-based short-term transitional housing program for adult women and their children. It creates an individual growth plan with each woman, assessing needs and goals to create a plan for progress. In exchange for committing to progress towards independent living New Hope Ministries provides a safe communal home where the residents can get on their feet and find employment. They offer a variety of support and services with the love and hope of Jesus Christ to help integrate each woman into society as a self-sufficient and productive member.

Call 785-447-1690 Email: nhmprogrammanager@gmail.com

MENTAL HEALTH SERVICES

Central Kansas Mental Health Center

Serves Ottawa County. Services include prevention and education services, outpatient programs for adults and children (case management, attendant care, groups, medication services), and therapy for adults and children. Private insurance and KanCare are accepted. Sliding scale available for uninsured clients. A therapist comes to Minneapolis weekly.

24 Hour Emergency Line:	1-785-823-6322
809 Elmhurst, Salina, KS	1-800-794-8281

Pawnee Mental Health

Serves Clay, Cloud, Republic, and Washington counties. Services include prevention and education services, outpatient programs for adults and children (case management, attendant care, groups,

medication services), and therapy for adults and children. Private insurance and KanCare are accepted. Sliding scale available for uninsured clients.

24 Hour Emergency Line: 1-800-609-2002

503 Grant Ave., Clay Center, KS 785-632-2108
210 W. 21st St., Concordia, KS 785-243-8900
1836 M St., Belleville, KS 785-527-2549
321 C St., Suite 102, Washington, KS 785-325-3252

[Cornerstone Family Counseling Center](#)

1408 Poyntz
Manhattan, KS
785-776-4105

[Kerr's Counseling](#)

520 Washington, Suite C
Concordia, KS
785-243-4164

[The K-State Family Center](#)

139 Campus Creek Complex
Manhattan, KS
785-532-6984

[Stillwell Counseling](#)

619 Court Street
Clay Center, KS
785-630-5500

[Courser Lapo](#)

Clinical & Family Services Therapy

In-home therapy, drug/alcohol counseling. Works in Republic, Washington, and Cloud County.

1329 18th Street Belleville, KS 785-560-3101

112 W. Main St. Beloit, KS

209 W. 6th St. Concordia, KS

1115 Westport Drive, Suite D Manhattan, KS

[Katie's Way](#)

Therapy and medicine management
720 Poyntz Ave. Manhattan KS 66502
785-320-7331

[Lahodney Counseling](#)

2006 M Street, Belleville, KS
785-955-5000
304 E. 3rd Street, Washington, KS
785-246-7394

MEDICAL SERVICES AND INSURANCE



KanCare

State insurance for low-income pregnant women, children, and families. Three MCO (managed care organizations) are available to provide insurance: Amerigroup, Sunflower, and United Healthcare.

KanCare Clearinghouse: 1-800-792-4884

www.kancare.ks.gov

Customer Service Hotlines:

Aetna: 1-855-221-5656

Sunflower: 1-877-644-4623

United Healthcare: 1-877-542-9238

Transportation Services

Sunflower – Logisticare 1-877-644-4623

United– Logisticare: 1-877-796-5847

KanCare Ombudsman:

The KanCare Ombudsman provides an independent and confidential resource for Kansas Medicaid members', with a primary focus on individuals participating in an HCBS waiver program or receiving other long-term care services through KanCare, and assists members in resolving their concerns

1-855-643-8180

www.kancare.ks.gov/ombudsman.htm

kancare.ombudsman@kdads.ks.gov

Health Departments

Provide WIC services, health education, childhood and adult immunizations, family planning services, health screenings, Maternal and Infant health services, day care licensing, as well as many other services.

Clay County Health Department
820 Spellman Circle
Clay Center, KS 67432
785-632-3193

Cloud County Health Department
910 W. 11th St.
Concordia, KS 66901
785-243-8140

Washington County Health Department
209 C. Street
Washington, KS 66968
785-325-2149

Republic County Health Department
2316 G. Street
Belleville, KS 66935
785-527-5671

Ottawa County Health Department
817 Argyle St.
Minneapolis, KS 67467
785-392-2822

Doctors

Clay County

Clay Center Family Physicians
609 Liberty St.
Clay Center, KS 67432
785-632-2181

Dr. Kent Erickson
409 Lincoln
Clay Center, KS 67432
785-777-2622

Cloud County

Family Care Center
1100 Highland Dr.
Concordia, KS 66901
785-243-4272

Family Care Center
311 Washington St.
Clyde, KS 66938
785-243-4272

Family Care Center
311 Walnut St.
Jamestown, KS 66948
785-439-6432

Clyde Family Physicians
105 N.High Street
Clyde, KS 66938
785-446-2226

Glasco Medical Center
302 E. 1st St.
Glasco, KS 67445
785-568-2586

Miltonvale Medical Clinic
205 Starr Avenue
Miltonvale, KS 67466
785-427-2244

Ottawa County

Comcare
830 Elm Street
Minneapolis, KS 67467
785-392-2144

Comcare
402 N. Michigan St.
Delphos, KS 67436
785-523-4261

Republic County

Belleville Medical Clinic
2337 G St., Suite 100
Belleville, KS 66935
785-527-2217

Washington County

Dr. Hodgson
302 E. 2nd
Washington, KS 66968
785-325-2240

Linn Family Physicians
706 3rd St.
Linn, KS 66953
785-348-5503

Blue Rapids Medical Clinic
607 Lincoln St.
Blue Rapids, KS 66411
785-363-7202

Community Physicians Clinic
1902 May St.
Marysville, KS 66508
785-562-3942

Marysville Clinic
808 N. 19th St.
Marysville, KS 66508
785-562-2311

Hanover Hospital and Clinic
205 S. Hanover St.
Hanover, KS 66945
785-337-2214

Community Health Centers

Konza Prairie Community Health Center
361 Grant Ave.
Junction City, KS 66441
785-238-4711

Konza Prairie Community Health Center
2030 Tecumseh Rd.
Manhattan, KS 66502
785-320-7134

Salina Family Healthcare Center
651 E. Prescott Ave.
Salina, KS 67401
785-825-7251

Hospitals

Clay County Medical Center
617 Liberty St.
Clay Center, KS 67432
785-632-2144

Cloud County Health Center
1100 Highland Dr.
Concordia, KS 66901
785-243-1234

Ottawa County Health Center
215 E. 8th St.
Minneapolis, KS 67467
785-392-2122

Republic County Hospital
2420 G St.
Belleville, KS 66935
785-527-2254

Washington County Hospital
304 E. 3rd St.
Washington, KS 66968
785-325-2211

Eye Doctors

Clay County

Stoppel & Brown
440 Lincoln St.
Clay Center, KS 67432
785-632-3822

Epic Vision Eye Center
629 W. Crawford
Clay Center, KS 67432
785-632-6100

Karli Hubka - Pediatric
629 W. Crawford
Clay Center, KS 67432
785-632-6100

Cloud County

Family Eye Care
222 W. 6th St.
Concordia, KS 66901
785-243-3386

Wentz Eye Care
135 E. 6th St., Suite 101
Concordia, KS 66901
785-243-3937

Dr. Steven Bryant
119 W. 7th St.
Concordia, KS 66901
785-243-2175

Ottawa County

Drs. Driver and Clark
407 W. 2nd St.
Minneapolis, KS 67467
785-392-2126

Republic County

Main Street Vision Center
2204 M St.
Belleville, KS 66935
785-527-2965

Washington County

Stoppel & Brown
318 C St.
Washington, KS 66968
785-325-2289

Epic Vision Eye Center
223 C St.
Washington, KS 66968
785-370-4733

Warren Clinic
205 S. Hanover
Hanover, KS 66945
785-337-2214

[See To Learn Program](#)

Allows for a free eye exam for children entering school by a participating doctor.
Call 1-800-960-EYES to schedule an exam.

[Lions Club International](#)

Provides assistance for children and individuals with sight needs. Contact your local chapter.

[Dentists](#)

Clay County

Clay Center Family Dentistry
714 Liberty St.
Clay Center, KS 67432
785-632-3126

Dr. Joe Ferguson
308 Court St.
Clay Center, KS 67432
785-632-6822

Dr. Wisdom (*Wednesday only*)
716 6th St.
Clay Center, KS 67432
785-632-2400

Poulson Family Dental
712 6th Street
Clay Center, KS 67432
785-632-2400

Cloud County

Dr. Matthew Kueker
135 W. 11th St.
Concordia, KS 66901
785-243-2212

Dr. Greg Hattan
501 Washington St.
Concordia, KS 66901
785-243-7927

Ottawa County

All Smiles Dental Care
201 W. 2nd St.
Minneapolis, KS 67467
785-392-2194

Riley County

Manhattan Tech
3136 Dickens Avenue
Manhattan, KS 66503

Republic County

Fischer Family Dentistry
2337 G St., Suite 3
Belleville, KS 66935
785-527-5602

Washington County

Dr. Meyler Gibbs
300 C St.
Washington, KS 66968
785-325-2248

DISABILITY SERVICES

[Community Developmental Disability Organizations](#)

These organizations provide services for individuals with disabilities including case management, home living services, state waiver services, and educational assistance.

Big Lakes Developmental Center
302 Lincoln St.
Clay Center, KS 67432
785-632-5357
(Serves Clay County)

OCCK
1502 Lincoln St.
Concordia, KS 66901
785-243-1977
(Serves Republic, and Cloud, counties)

Twin Valley Developmental Services, Inc.
427 Commercial
Greenleaf, KS 66943
785-747-2251
(Serves Washington county)

Disability Planning of Kansas
785-823-3173

Families Together Inc.
785-233-4777

[Infant Toddler Services \(Part C\)](#)

These organizations provide services for children between birth and 3 years of age that have developmental delays.

Pony Express Infant Toddler Services
405 N. 4th St.
Marysville, KS 66508
785-562-5502
(Serves USD 379 in Clay Co., USD 223 in Washington Co., Marysville)

Infant Child Development Program
(Early Intervention)
155 N. Oakdale, Suite 300
Salina, KS 67401
785-452-6050
(Serves Ottawa County)

Other Developmental Assistance Organizations

Three Rivers Independent Living Resource Center
820 Spellman Circle
Clay Center, KS 67432
785-777-2499
(Serves Clay and Washington counties)

Cares, Inc.
PO Box 314
Concordia, KS 66901
785-243-1077
(Assistance dogs)

KSDS, Inc.
120 W. 7th St.
Washington, KS 66968
785-325-2256
(Assistance dogs)

Disability Rights Center of Kansas
214 SW 6th Ave., Suite 100
Topeka, KS 66603
1-877-776-1541
(Provides advocacy for individuals with disabilities)

Keys for Networking, Inc.
900 S. Kansas Ave., Suite 301
Topeka, KS 66612
1-800-499-8732
(Information and assistance to families of children with educational, behavioral, or physical needs)

United Cerebral Palsy of Kansas
5111 E. 21st St. N
Wichita, KS 67208
316-688-1888
(Information/referral and financial assistance to children with disabilities)

Families Together, Inc.
1-888-815-6364
(Assistance to families with children who have IFSP's or IEP's)

EDUCATIONAL SERVICES

Adult Education

Salina Adult Education Center
2620 Centennial Rd.
Salina, KS 67401
785-309-4660
(Adult basic education, GED preparation, citizenship classes, and ESL classes)

Cloud County Community College
2221 Campus Dr.
Concordia, KS 66901
785-243-1435 OR 1-800-729-5101
(Adult basic education, GED preparation, job skills, life skills, basic computer skills)

Smoky Hill Education Service Center
1001 E. 7th St.
Concordia, KS 66901
785-243-4417
(Virtual high school diploma program)

Marshall County Lifelong Learning
405 N. 4th St.
Marysville, KS 66508
785-562-7249
(Adult basic education, GED preparation)

Preschools

Ark Preschool	1330 15 th St., Clay Center, KS 67432	785-632-5653
St. Paul Lutheran	816 9 th St, Clay Center, KS 67432	785-632-5301
TLEC Clay/Washington	10210 Grant Ave, Clay Center, KS 67432	785-632-3176
Little Sam	836 Argyle Ave, Minneapolis, KS 67467	785-407-5003
Bright Beginnings	325 E. 8 th St., Concordia, KS 66901	785-243-1439
Golden Rule	122 W. 6 th St., Concordia, KS 66901	785-614-5076
Glasco Community Preschool	503 N. Railroad Ave, Glasco, KS 67445	785-568-8147
Clifton/Clyde Pre-K Program	120 N. Cloud, Clifton, KS 66937	785-455-3319
Linn Lutheran Preschool	112 Church St., Linn, KS 66953	785-348-5792
Hanover Wee Cat Preschool	100 S. Church St., Hanover, KS 66945	785-337-2733
USD 109 East Elementary	1205 19 th Street Belleville, KS 66935	785-527-2330
USD 108 Preschool	114 NE Street, Washington, KS 66968	785-325-2119
Early Childhood Preschool	212 N. Tripp Street, Barnes, KS 66933	785-763-4231

Head Start

314 Court Clay Center, KS	785-632-2195
803 Valley St. Concordia KS	785-243-1645
117 W. College St. Washington KS	785-325-2261 Ext. 248
612 N. Rothsay Minneapolis KS	785-392-2794
1812 L. St. Belleville, KS	785-527-2300

Parents as Teachers

Educational and family services for families prenatal up to 3 years of age. PAT serves families in the school district they are associated with.

Clay Center: 785-632-1127

Minneapolis: 785-392-2304

Bennington: 785-488-3325

Concordia: 785-243-0959 (serves Washington, Republic, and Cloud counties)

School Districts

USD 379 (Clay Center and Wakefield)

District Office	785-632-3176
Lincoln Grade School	785-632-2156
Garfield Grade School	785-632-2125
Clay Co. Community Middle School	785-632-3232
Clay Co. Community High School	785-632-2131
Wakefield Public Schools	785-461-5437
School Bus Garage	785-632-5373

USD 224 (Clifton and Clyde)

District Office	785-446-2098
Clifton/Clyde Grade School	785-445-3319
Clifton/Clyde Middle School	785-445-3323
Clifton/Clyde High School	785-446-3444
School Bus Garage	785-455-3566

USD 239 (Minneapolis and Delphos)

District Office	785-392-2167
Minneapolis Grade School	785-392-2111
Minneapolis Jr. /Sr. High School	785-392-2113
School Bus Garage	785-392-2154

USD 240 (Bennington and Tescott)

District Office	785-488-3325
Bennington Grade School	785-488-3323
Bennington High School	785-488-3321
Tescott Grade School	785-283-4774
Tescott High School	785-283-4385

USD 333 (Concordia)

District Office	785-243-3518
Concordia Elementary School	785-243-8853
Concordia Middle School	785-243-2114

Concordia Jr/Sr. High School 785-243-2452
USD 334 (Miltonvale and Glasco)
District Office 785-427-3334
Miltonvale Grade and High School 785-427-3250
Glasco Grade and High School 785-568-2291

USD 108 (Washington)
District Office 785-325-2261 ext. 3
Washington Elementary School 785-325-2261 ext. 2
Washington High School 785-325-2261 ext. 1
School Bus Garage 785-325-2261 ext. 4

USD 223 (Linn, Barnes, and Hanover)
District Office 785-763-4231
Linn Public Schools 785-348-5531
Hanover Public Schools 785-337-2281

USD 109 (Republic County)
District Office 785-527-5621
East Elementary 785-527-2330
Belleville High School 785-527-2281

USD 426 (Pike Valley)
District Office 785-335-2206
Pike Valley Elementary/Jr. High School 785-374-4221
Pike Valley High School 785-335-2294



HOUSING SERVICES

Restore - Habitat for Humanity
514 Pillsbury Drive
Manhattan, KS 66502
785-537-7545
Hours: Thurs.-Sat. 10am-4pm

Marshall County Restore
2006 Center St.
Marysville, KS 66508
785-562-1070
Hours: Mon.-Fri. 9am-5pm, Sat. 9am-4pm

Household Weatherization Program
North Central Regional Planning Commission
1-800-432-0303

Kansas Emergency Rental Assistance
www.kera.kshousingcorp.org

Section 8 (available in all counties except Washington)

North Central-Flinthills Area Agency on Aging
401 Houston
Manhattan, KS 66502
785-776-9294
1-800-432-2703
www.ncfhaaa.com

Low-income Housing Units

Clay County

McKinley Apartments (Community Action, Inc.)
731 Crawford
Clay Center, KS
785-632-6846

Eastgate Apartments
1420 Blunt St.
Clay Center, KS
785-776-6332 or 337-256-1474

Apollo Towers (Clay Center Housing Authority)
330 W. Court St.
Clay Center, KS 67432
785-632-2100 or 785-632-5053

Howard Miller Apartments
507 Knollwood St.
Wakefield, KS 67487
785-461-5551

Meadowbrook Cottages
1505 18th Rd.
Clay Center, KS 67432
785-447-3893

Cloud County

Concordia Apartments
516 E. 16th St., Apt. 16
Concordia, KS 66901
785-243-4464

Sunflower Apartments
804 Russ
Concordia, KS 66901
785-243-5085

Cloud County, cont.

Tower Apartments
612 E. 17th St.
Concordia, KS 66901
620-236-3557

Westview Apartments
100 W. Highway 9
Clifton, KS 66937
785-455-3454

Ottawa County

Minneapolis Housing Authority
114 S. Rock St.
Minneapolis, KS 67467
785-392-3272

Washington County

Washington Housing Authority
310 Washington St.
Washington, KS 66968
785-325-2416

Linn Housing Authority
305 Cedar Street
Linn, KS 66953
785-348-5774

Savannah Park Apartments
807 Matthew
Concordia, KS 66901
785-243-1243

Concordia Housing Authority
Cloud Village Apartments
700 Cloud Street, Concordia, KS 66901
785-262-7510

Republic County

Belleville Housing Authority
1815 24th St.
Belleville, KS 66935
785-527-5730

Greenleaf Housing Authority
302 Hillcrest Lane
Greenleaf, KS 66943
785-747-2865

Hanover Housing Authority
100 Highland Hvn.
Hanover, KS 66945
785-337-2246



LIBRARIES

Carnegie Library	706 6 th St. Clay Center, KS 67432	785-632-3889
Belleville Public Library	1327 19 th St., Belleville	785-527-5305
Courtland Community Library	403 Main St., Courtland	785-374-4260
Scandia City Library	318 4 th St., Scandia	785-335-2271
Cloud Co. Comm. College	2221 Campus Dr., Concordia	785-243-1435
Clyde Public Library	107 South St., Clyde	785-446-3563
Frank Carlson Public Library	702 Broadway, Concordia	785-243-2250
Glasco Public Library	206 E. Main, Glasco	785-568-2313
Jamestown Public Library	311 Walnut, Jamestown	785-439-6258
Clifton Public Library	104 E. Parallel, Clifton	785-455-2222
Delphos Public Library	114 W. 2 nd St Delphos, KS 67436	785-523-4668
Minneapolis Public Library	519 Delia Minneapolis, KS 67467	785-392-3205
Washington Public Library	116 E. 2 nd , Washington KS 66968	785-325-2114

GENERAL PUBLIC TRANSPORTATION

Clay County	785-632-2447
Cloud County	785-275-1878
Concordia Senior Center	785-243-1872
OCCK	785-826-1583 OR 855-577-4337
Republic County	785-527-7239
Ottawa County	785-392-2822
Washington County	785-325-2109

SWIMMING POOLS

Washington	200 Parkview Lane	785-541-1005
Clifton	501 E. Parallel	785-455-3661
Greenleaf	714 Commercial	785-747-2410
Linn	102 1 st St. Linn	785-348-5314
Clay Center	209 Dexter	785-632-5149
Concordia	318 W. 11 th Street	785-243-1150
Bennington	415 N Putnam	785-488-3388
Minneapolis	161 S. Mill	785-392-2402
Belleville	1819 L St.	785-527-7167

AFTER SCHOOL PROGRAMS

Clay Center Project Lead	Lincoln Elementary	Kristin Avery/Rayleen Dreher	785-630-0315
Clay Center Project Lead	Garfield Elementary		785-630-0319
Clay Center Time 4 You	Common Ground	Bob Stratton	785-632-3293
Clay Center Circle J	Baptist Church	Wednesday's 3:30 PM	785-632-5474
Republic County	East Elementary	1811 O Street	785-527-3388
Cloud County CAP	Elementary School	1001 E. 7 th Street	785-275-3636

RECREATION PROGRAMS

Clay Center Parks & Recreation	212 W. Dexter	Patrick Hayes	785-632-3797
Clay Center Public Zoo	4 th and Pomeroy (Utility Park)		
Clay Center Wrestling Club		Eric Alquist	785-632-7069
Clay County Boy Scouts/Cub Scouts		Diana Holloway	406-756-8752
Clay Center Girl Scouts	319 Blunt		785-632-5435
Cloud County City Hall	701 Washington Street		785-243-2670
Concordia Boy Scouts/Cub Scouts	525 E. 15 th St.	Les Dethloff	785-243-2098
Ottawa County Boy Scouts			785-827-4461
Ottawa County Girl Scouts			785-827-3679
Republic Summer Bus Program	Open to children K-6 th		785-955-0317
Republic County Boy Scouts	Boys ages 8-18	Tom Snapp	785-527-2530
Republic County Girl Scouts	Girls ages 8-18	Karla Jeardoe	785-527-5671
Hanover Boy Scouts		Dan Weiden	785-337-2484
Washington Boy Scouts		Rick Dean	785-325-2394
Washington Cub Scouts		Andrew Lucas	785-527-1325
Washington Girl Scouts		Lori Jones	785-325-2399
Concordia Big Brothers Big Sisters	201 W. 6 th (2 nd floor)	Jenn Workentien	785-243-2098

K-STATE RESEARCH AND EXTENSION

Clay County	322 Grant	785-632-5335
Cloud County	811 Washington, Suite E	785-243-8185
Ottawa County	307 N. Concord	785-392-2147
Republic County	1815 M St	785-527-5084
Washington County	214 C. Street	785-325-2121

THRIFT STORES

Catholic Thrift shop	107 E. 6 th , Concordia	785-243-6001
Seeds of Hope	408 Washington, Clyde	785-446-0046
Deb's Things and Such	1204 Lincoln St, Concordia	785-262-4096
Upcycle Consignment	1825 E. 6 th Concordia	785-262-4242
Trading Post	214 W. 6 th Concordia	785-275-2427
Bargain Basket	336 W. 5 th Concordia	785-826-9042
AdHISon Daily	103 N. Concord Minneapolis	785-488-8121
Second Time around Consignment	1430 28 th Street Belleville	785-527-8291
Lighthouse for Christ	413 Lincoln, Clay Center	785-447-9359

FOOD, FINANCIAL, AND EMERGENCY RESOURCES

Consumer Credit Counseling Services
1201 W. Walnut
Salina, KS 67401
785-827-6731

Housing and Credit Counseling, Inc.
323 Poyntz, Suite 101
Manhattan, KS 66502
785-539-6666

Catholic Charities
1500 S. 9th
Salina, KS 67401
785-825-0208

Catholic Charities
323 Poyntz, Suite 102
Manhattan, KS 66502
785-323-0644

Community Action, Inc.
1000 SE Hancock
Topeka, KS 66607
785-235-9296

Clay County

Food Commodities
Clay Center Elks
611 5th Street
785-632-2626

The Giving Box
Catholic Parish
730 Court Street Clay Center
(non-perishable foods as needed)

Harvesters (3rd Wednesday of the month)
Evangelical Covenant Church
1330 15th Street Clay Center
11:00 AM
785-632-3200

Clay County Children's Trust
Union State Bank
701 5th St.
Clay Center, KS 67432
785-632-3122
(Financial assistance for children who meet special requirements)

Clay County, cont.

Lighthouse for Christ
413 Lincoln
Clay Center, KS 67432
Hours: Monday 3PM-6PM Thursday 12PM-3PM
(Thrift store, Emergency assistance.
Must receive referral from a local church for assistance)

Salvation Army
Baptist Church
785-632-5474
785-632-5613

Catholic Charities
Clay County Health Department
Spellman Circle, Clay Center KS 67432
785-323-0644 or 785-632-3193
(Services provided once a month)

Food Panty Wakefield
Baptist Fellowship Church
Lisa Judy
785-307-5549

Cloud County

Food Commodities
1st United Methodist Church
740 W. 11th St.
Concordia, KS 66901
785-243-4560

Cloud County Resource Center
107 W. 7th
Concordia, KS 66901
785-243-1065
Hours: MWF 9am-2pm (Food bank closes at 11am)

WIC (food pantry)
785-243-8140

(Food bank, summer lunch program, Emergency assistance, Alternative school)

Manna House of Prayer
323 E. 5th St.
Concordia, KS 66901
785-243-4428
Hours: 8am-4pm Mon.-Fri.
(Food assistance, Spiritual direction,
Addiction counseling)

DCF (Department for children and families)
1501 E. 6th Street
Concordia, KS 66901
785-243-4671
1-800-766-3777

Catholic Charities
520 Washington Street
Concordia, KS 66901
785-243-4167

Ministerial Association
1517 Cedar Street
Concordia, KS 66901
785-243-3449

Neighbor to Neighbor 785-262-4215
103 E. 6th St., Concordia, KS 66901

Ottawa County

Heartland Share
Minneapolis Catholic Church
117 E. Vine
Minneapolis, KS 67467
785-392-2013
(Nutritious food packages
with 50-60% savings)

American Red Cross
145 S. Santa Fe
Salina, KS 67401
785-827-3644

Republic County

Republic County Food Bank
2013 M Street
Belleville, KS 66935
785-955-0086

First Christian Church
321 N. Mill Street
Beloit, KS 67420
785-738-3071
(Food Assistance)

NEK-CAP, Inc.
1112 N. Independence Ave
Beloit, KS 67420
785-547-7136
Kaydee Tran-Community Dev. Advocate
(Republic & Washington counties)

Washington County

Prairie Land Food Coop
Good Shepherd Lutheran Church
401 D St. Washington, KS 66968
785-325-2944

Love Inc.
PO Box 115
Minneapolis, KS 67467
785-392-3474
(Food bank, Crisis, Parenting, Basic needs)

WIC (Food Pantry)
785-392-2822

Meals on Wheels
785-392-3338

Republic County Resource Council
Karla Jeardoe
2420 G St.
Belleville, KS 66935
785-527-2254
(Emergency assistance)

Republic County Ministerial Association
785-527-0229

Beloit Ministerial Association
785-738-5315

WIC (Food Pantry)
785-527-5671

Red Cross and Salvation Army
Deb Swoboda
785-325-2134

Washington County, cont.

Washington County Food Pantry
Edith's House
200 W. 4th Street
Washington, KS 66968
785-614-1346
Monday's 3PM- 5PM

Harvesters
Washington County Ministerial Association
401 D. St. Washington, KS 66968
785-325-3225
(First Thursday of each month 10:30 AM)

Swaddling Clothes Bethlehem Lutheran Church
Located on the west side of Greenleaf Business Center
Greenleaf, KS 66943
785 747 2407.
(Open 2nd & 4th Monday 4:00-6:00 PM by appointment only)

EMPLOYMENT RESOURCES

KANSASWORKS (Assistance with employment resources, job seeking, and unemployment)

Junction City Workforce Center	1012 W. 6 th St., Suite A	785-762-8870
Manhattan Workforce Center	205 S. 4 th , Suite K	785-539-5691
Manhattan Vet Center	205 S. 4 th , Suite 1B	785-350-4920
Salina Workforce Center	203 N. 10 th St.	785-827-0385

Flint Hills Job Corp
4620 Eureka Dr.
Manhattan, KS 66503
785-537-7222

(A no-cost education and career technical training program that helps young people ages 16 through 24 improve the quality of their lives through career technical and academic training. Benefits include housing, meals, wellness center, single and single parent dorms, and a child development center.)

PARENTING/PREGNANCY RESOURCES

Birthright
1125 E. Iron Ave
Salina, KS 67401
785-823-3113
(pregnancy testing/counseling)

Pregnancy Service Center
104 W. Elm
Salina, KS 67401
785-823-1484
(pregnancy testing/crisis/counseling)

Life Choice Ministries
1441 Anderson Ave.
Manhattan, KS 66502
785-776-9406
(pregnancy testing/crisis/counseling)

ChildCare Aware of Kansas
1508 E. Iron Ave.
Salina, KS 67401
785-823-3343
www.ks.childcareaware.org
(daycare resources/assistance)

Child Abuse Prevention Services (CAPS)
155 N. Oakdale Ave., Suite 200
Salina, KS 67401
785-825-4493
1-800-922-5330
www.capsosalina.org
(Parenting resource/assistance)

Parent Helpline
855-427-2736
(24 hr., 7 day a week helpline in
English and Spanish
for parenting concerns or help with stressful
situations, referrals to community resources)

Simply Baby – Free Prenatal Classes
Clay County Health Department
820 Spellman Circle
Clay Center, KS 67432
785-632-3193
(parenting classes with incentives)

Heart Choices
[Heart Choices - Beloit, KS - Home \(heartchoicespregnancy.com\)](http://heartchoicespregnancy.com)
910 W. 11th Street Concordia, KS 785-262-7138
602 W. 6th Street Beloit KS 785-738-3433

Early Head Start
1021 4th Street
Clay Center, KS 67432
785-632-5399
Serves Prenatal – age 3 in Clay, Cloud, Ottawa, Republic, & Washington counties

The Pregnancy and Postpartum Resource Center of Kansas
(866)363-1300
[Home - Pregnancy Help Center \(kansasppd.org\)](http://kansasppd.org)
English/Spanish

KIDS Kansas Infant Death and SIDS Network
(316)682-1301
[Kansas Infant Death & SIDS - Home \(kidsks.org\)](http://kidsks.org)

Text4Baby – Download on Apple or Android Play Store
Health and Safety tips, interactive features and resources
[:: text4baby ::](http://text4baby.org)

Hotlines:

Poison Control	800-222-1222
National Hotline for Mental Health Crises	
Suicide Prevention	800-273-8255 or 988

SUBSTANCE ABUSE RESOURCES

Alcoholics Anonymous
www.kansas-aa.org
(meetings are posted on website)

Narcotics Anonymous
www.na.org
(meetings are posted on website)
800-561-2250

Al-Anon
www.kansas-al-anon.org
(meetings are posted on website)
866-362-4427

Heartland RADAC
www.hradac.com 1-800-281-0029
(assessment and referral for inpatient
treatment, case management services)

Central Kansas Foundation
1805 S. Ohio
Salina, KS 67401
785-825-6224
(drug/alcohol prevention and treatment)

Pawnee Mental Health Center
1558 Hayes Dr.
Manhattan, KS 66502
785-587-4315
(drug/alcohol prevention and treatment for Republic,
Cloud, Clay, and Washington counties. Offices in
Concordia, Washington, Clay Center, and Belleville.)

Ashby House/Bridge House
153 S. 8th St.
Salina, KS 67401
785-826-4935
www.ashbyhouse.org SSSS

Kerr's Counseling
520 Washington St.
Concordia, KS 66901
785-243-4164
(drug/alcohol prevention and treatment)

Great Awakenings
107 S. 7th Street
Clay Center, KS 67432
785-632-5063

Freedom Club
317 W. 5th Street
Concordia, KS 66901
785-413-0334

Celebrate Recovery Thursday's @ 6:30 PM
Wesleyan Church
1603 Cedar Street Concordia, KS 66901 785-614-3660



Community Resource Guide

A quick guide to basic services available in **Cloud County**, Kansas

Information is provided as a community service and does not necessarily constitute endorsement. This is not a complete list of resources; information is updated annually.

Medical

Local Health Services/Clinics

Cloud County health Center, Concordia	(785) 243-1234
Cloud County Health Department, Concordia	(785) 243-8140
Mitchell County Hospital, Beloit	(785) 738-2266
Pregnancy Service Center, Salina	(785) 823-1484
Salina Family Healthcare Center, Salina	(785) 825-7251
Flint Hills Community Clinic, Manhattan.....	(785) 323-4351
Konza Prairie Community Health Center, Manhattan	(785) 320-7134

Mental Health

Pawnee Mental Health Services, Concordia	(785) 243-8900
Central Kansas Mental Health Center, Abilene	(785) 823-6322
Konza Prairie Community Health Center, Manhattan	(785) 320-7134
National Alliance on Mental Illness (NAMI)	(800) 539-2660
National Suicide Prevention Lifeline	(800) 273-8255
Saint Francis Ministries	(800) 423-1342
Salina Family Healthcare Center, Salina	(785) 825-7251

Mental Health and Substance Abuse Services

Dental Services

Matthew Kueger, Dentist, Concordia	(785) 243-2212
Greg Hattan DDS, Concordia	(785) 243-7927
Kansas Donated Dental Services Online Application.....	https://dentallifeline.org/kansas/
Kansas Donated Dental Services	(785) 273-1900 or (888) 870-2066
Kansas Mission of Mercy Dental Project	http://www.ksdentalfoundation.org/patients/
Konza Prairie Community Health Center, Manhattan	(785) 320-7134
Salina Emergency Aid/Food Bank, Salina	(785) 827-7111
Salina Family Healthcare Center, Salina	(785) 826-9017
Smiles Change Lives (discounted braces)	https://www.smileschangelives.org/
Smiles for Success	https://smilesforsuccess.org/

Eye Care

Wentz Eye Care, Concordia	(785) 243-3937
Family Eye Care, Concordia	(785) 243-3386
EyeCare America	(877) 887-6327
Kansas City Free Eye Clinic, KCMO Online Application	www.kcfreeeyeclinic.org
Kansas City Free Eye Clinic, KCMO.....	(816) 471-4673
Lions Club International (provides free eye exams and eyeglasses to qualified participants)	(316) 773-2100
Salvation Army, Salina (Vision USA)	(785) 823-2251
See To Learn (3 year-olds)	(800) 960-3937

Prescription Services

Catholic Charities, Manhattan (prescription assistance)	(785) 323-0644
Needy Meds (helps with cost of medicine)	www.needymeds.org
Prescription Assistance Program.....	www.KansasDrugCard.com
Rx Assist (helps with cost of medicine)	www.rxassist.org
Salina Emergency Aid/Food Bank, Salina	(785) 827-7111
Salina Family Healthcare Center, Salina	(785) 452-3900
Shepherd's Crossing, Manhattan (prescription assistance).....	(785) 776-1470

Assistive Equipment

Assistive Technology for Kansans	(800) 526-3648
KEE Reuse Program (supply or exchange medical equipment for adults and children)	(800) 526-3648

Other Health Services

Community Care Network of Kansas www.communitycareks.org	(785) 233-8483
KanCare/Medicaid eligibility and renewal, KanCare Clearinghouse	(800) 792-4884
KanCare application, benefits and assistance	www.kancare.ks.gov
KanCare Ombudsman office.....	(855) 643-8180
.....	www.KanCareOmbudsman.ks.gov
Kansas Special Health Care Needs (SHCN) Program (infants to age 21).....	(785) 826-6600
Kansas State Farmworker Health Program, Topeka	(785) 296-2671
Ryan White Program (HIV/STI help) (www.kdheks.gov/sti_hiv/ryan_white_care.htm).....	(316) 293-2652
Senior Health Insurance Counseling for Kansas (SHICK)	(800) 860-5260

Information and Referral

Local Resources

American Red Cross, Fort Riley (Military, Veterans)	(785) 239-1887
American Red Cross, Manhattan	(785) 537-4304
American Red Cross, Salina	(785) 827-3644
Catholic Charities, Manhattan	(785) 323-0644
Catholic Charities, Salina	(785) 825-0208
Cloud County Commission on Aging, Concordia	(785) 243-1872
Salina Emergency Aid/Food Bank, Salina	(785) 827-7111
Salina Rescue Mission, Salina	(785) 823-2610
Salvation Army, Manhattan	(785) 539-9399
Salvation Army, Salina	(785) 823-2251
United Way	2-1-1
United Way, Manhattan	(785) 776-3779
United Way, Salina	(785) 827-1312

Regional/State Organizations

Aging and Disability Resource Center (ADRC), Manhattan	(785) 776-9294
Area Agency on Aging, Salina	(785) 823-1277
Birthright	(800) 550-4900
Disability Planning Organization of Kansas (DPOK), Salina	(785) 823-3173
Family Crisis Center Hotline, Great Bend	(620) 792-1885
Kansas Children's Service League	(877) 530-5275
Kansas Commission on Veterans Affairs, Salina	(785) 823-2862
Kansas Crisis Hotline, Manhattan	(785) 539-7935
Kansas Department for Children and Families, Concordia (www.dcf.ks.gov).....	(785) 243-4671
Kansas Elder Law Hotline.....	(888) 353-5337
Kansas Legal Services	(620) 225-4041
Long Term Care Ombudsman	(877) 662-8362
Operation Homefront (Military Families)	(877) 264-3968
Saint Francis Ministries	(800) 423-1342
Social Security Administration, Salina	(877) 405-3494
Urban League of Kansas	(316) 262-2463

Food

Cloud County Resource Center, Concordia	(785) 243-1065
Concordia Senior Center, Concordia	(785) 243-1872
First United Methodist Church, Concordia	(785) 243-4560
Friendship Meals, Clay Center	(785) 632-5767
Manna House of Prayer, Concordia	(785) 243-4428
Abilene Area Food & Clothing Center, Abilene	(785) 263-1221
Beloit First Christian Church, Beloit	(785) 738-3071
Catholic Charities, Salina.....	(785) 825-0208
City of Jamestown, Jamestown	(785) 439-6621
National Hunger Hotline	(866) 3-HUNGRY
Prairie Land Food, Manhattan	(800) 998-9436
Saint Paul's Episcopal Church, Clay Center	(785) 632-7030
Salina Emergency Aid/Food Bank, Salina	(785) 827-7111
Salina Rescue Mission, Salina	(785) 823-2610
Salvation Army, Manhattan	(785) 341-1254
Salvation Army, Salina	(785) 823-2251

76. Transportation

81 Connection, Salina	(785) 826-1583
Concordia Senior Center, Concordia	(785) 243-1872
Disabled American Veterans (VA appointments)	(913) 651-2402
Med-A-Van, Salina (to/from Salina)	(785) 826-1583
OCCK Transportation, Salina	(855) 577-4337
Sunset Home, Concordia (elderly)	(785) 243-2720

Shelter

Homeless Shelters/Transitional Housing

American Red Cross, Leavenworth (Veterans).....	(913) 682-6222
Ashby House, Salina	(785) 826-4935
Homeless Shelter Hotline.....	(816) 474-4599
Hope Center, Abilene	(785) 263-4673
Manhattan Emergency Shelter, Manhattan	(785) 537-3113
Salina Rescue Mission, Salina	(785) 823-2610
The Open Door Emergency Housing Shelter, Junction City	(785) 238-3599
U.S. Department of Veteran Affairs, VASH Voucher Program for Veterans	(877) 424-3838

Rent & Utilities

Catholic Charities, Salina	(785) 825-0208
HOPE CENTER, Abilene	(785) 263-4673
Kansas Lifeline Program (low cost telephone service).....	(800) 662-0027
Low Income Energy Assistance Program (LIEAP).....	(800) 432-0043
Salina Emergency Aid/Food Bank, Salina	(785) 827-7111
Salvation Army, Manhattan	(785) 539-9399
Salvation Army, Salina	(785) 823-2251
SAVE, Inc. (HIV/AIDS).....	(816) 531-8340
Shepherd's Crossing, Manhattan	(785) 776-1470

Landlord Issues

Housing and Credit Counseling (Landlord and tenant issues) (www.hcci-ks.org)	(800) 383-0217
Kansas Housing Resources Corporation (www.kshousingcorp.org)	(785) 217-2001
Kansas Legal Services	(800) 723-6953

Housing

Aging and Disability Resource Center (ADRC), Manhattan	(785) 776-9294
American Red Cross, Salina	(785) 827-3644

Belleville Housing Authority, Belleville	(785) 527-5730
Beloit Housing Authority, Beloit	(785) 738-5210
Clay Center Housing Authority, Clay Center	(785) 632-2100
Concordia Housing Authority, Concordia	(785) 262-7510
Kansas Housing Assistance Program	www.kshap.org
Kansas Housing Resources Corporation (includes weatherization assistance)	(785) 217-2001 www.kshousingcorp.org
Kansas Rural Development	(785) 271-2700
Minneapolis Housing Authority, Minneapolis	(785) 392-3272
North Central Regional Planning Commission, Beloit (weatherization assistance)	(800) 432-0303
Salina Housing Authority, Salina	(785) 827-0441
U.S. Department of Veteran Affairs, VASH Voucher Program for Veterans	(877) 424-3838

Other Resources

Kansas Department of Health and Environment ([KDHE](#)) [Resource Tool Kit](#)

[Kansas Commission on Disability Concerns \(KCDC\)](#) Choose “Life Resources” or “Youth” at top of page.

Help for Sexual and Domestic Violence (added 2/2022)

- Kansas Coalition Against Sexual and Domestic Violence..... (785) 232-9784
[Kansas Coalition Against Sexual and Domestic Violence \(KCSDV\)](#)
Kansas Sexual and Domestic Violence Service Providers – Find Services Near You. [Kansas Sexual and Domestic Violence Organizations – Find on Map | Kansas Coalition Against Sexual and Domestic Violence \(KCSDV\)](#)
Safety Plan for Victims [Safety Plan for Victims of Domestic Violence | Kansas Coalition Against Sexual and Domestic Violence \(KCSDV\)](#)
Kansas Crisis Hotline (888) 363-2287
National Domestic Violence Hotline (800) 799-7233
..... SMS: Text START to 88788

Dental Services

- Community Care Ministries, Wamego (785) 456-7872
Kansas Donated Dental Services Online Application..... <https://dentallifeline.org/kansas/>
Kansas Donated Dental Services..... (785) 273-1900 or (888) 870-2066
Kansas Mission of Mercy Dental Project<http://www.ksdentalfoundation.org/patients/>
Kansas Neurological Institute, Topeka (*for people with developmental disabilities*) (785) 296-5377
Kansas State Farmworker Health Program, Topeka (785) 296-2671
Konza Prairie Community Health Center, Junction City (785) 238-4711
Salina Emergency Aid/Food Bank, Salina (785) 827-7111
Salina Family Healthcare Center, Salina (785) 826-9017
Smiles Change Lives (*discounted braces*) <https://www.smileschangelives.org/>
Smiles for Success <https://smilesforsuccess.org/>

Eye Care

- EyeCare America (877) 887-6327
Envision Vision Rehab Center, Wichita..... (316) 440-1600
Kansas Dept. for Aging and Disability Services (*Blind and Visually Impaired*) (866) 213-9079
Lions Club International (*provides free eye exams and eyeglasses to qualified participants*) (316) 773-2100
Salvation Army, Salina (*Vision USA*) (785) 823-2251
See To Learn (*3 year-olds*) (800) 960-3937
Vision USA (620) 231-4230

Prescription Services

- Catholic Charities, Manhattan (*prescription assistance*) (785) 323-0644
Needy Meds (helps with cost of medicine) www.needy meds.org (800) 503-6897
Prescription Assistance Program..... www.KansasDrugCard.com

Rx Assist (<i>helps with cost of medicine</i>)	www.rxassist.org
Salina Emergency Aid/Food Bank, Salina	(785) 827-7111
Salina Family Healthcare Center, Salina	(785) 452-3900
Shepherd's Crossing, Manhattan (<i>prescription assistance</i>).....	(785) 776-1470

Assistive Equipment

Assistive Technology for Kansans	(800) 526-3648
KEE Reuse Program (<i>supply or exchange medical equipment for adults and children</i>)	(800) 526-3648
Kansas Equipment Exchange (<i>supply or exchange medical equipment for adults and children</i>).....	(800) 526-3648
K-Loan	(620) 421-6554
Three Rivers Center for Independent Living (<i>helps people with disabilities</i>).....	(785) 777-2499

Other Health Services

Area Agency on Aging, Dodge City, (Mignon Lucky).....	(620) 663-3989
Community Care Network of Kansas	www.communitycareks.org ... (785) 233-8483
KanCare/Medicaid eligibility and renewal, KanCare Clearinghouse	(800) 792-4884
KanCare application, benefits and assistance	www.kancare.ks.gov
KanCare Ombudsman office.....	(855) 643-8180
.....	www.KanCareOmbudsman.ks.gov
Kansas Special Health Care Needs (SHCN) Program (<i>infants to age 21</i>)	(785) 826-6600
Kansas State Farmworker Health Program, Topeka	(785) 296-2671
Early Detection Works (for breast and cervical cancer issues)	(877) 277-1368
Medicare	(800) 633-4227
Ryan White Program (HIV/STI help) www.kdheks.gov/sti_hiv/ryan_white_care.htm	(316) 293-2652
Saint Francis Ministries	(800) 423-1342
Senior Health Insurance Counseling for Kansas (SHICK)	(316) 232-7107
Senior Health Insurance for Kansans, Brad Kimer.....	(620) 342-2505 Ext. 226

Information and Referral

Local Resources

American Red Cross, Fort Riley (<i>Military, Veterans</i>)	(785) 239-1887
American Red Cross, Herington	(785) 258-2000
American Red Cross, Manhattan	(785) 537-4304
Catholic Charities, Manhattan	(785) 323-0644
Catholic Charities, Salina	(785) 825-0208
Catholic Charities, Topeka.....	(785) 233-6300
Salina Emergency Aid/Food Bank, Salina	(785) 827-7111
Salina Rescue Mission, Salina	(785) 823-2610
Salvation Army, Manhattan	(785) 539-9399

Salvation Army, Salina	(785) 823-2251
Salvation Army, Topeka	(785) 233-9648
United Way	2-1-1
United Way, Manhattan	(785) 776-3779
United Way, Salina	(785) 827-1312
Parent Helpline (www.1800CHILDRENKS.org)	(800) 244-63731
Find local help and resources	www.Findhelp.org
211 through United Way of the Plains (<i>Central Kansas</i>).....	(316) 267-1321
.....	Looking for help? United Way 211 can help. (unitedwayplains.org)
Support groups in Kansas.....	https://supportgroupsinkansas.org/support-groups
Three Rivers Center for Independent Living (<i>helps people with disabilities</i>)	(785) 777-2499

Regional/State Organizations

Aging and Disability Resource Center (ADRC), Manhattan	(785) 776-9294
Area Agency on Aging, Manhattan	(785) 776-9294
Big Lakes Developmental Center (CDDO), Manhattan	(785) 776-9201
Birthright	(800) 550-4900
Elder Hotline (<i>legal assistance for elders</i>).....	(888) 353-5337
Disability Rights Center.....	(785) 273-9661
Family Crisis Center Hotline, Great Bend	(620) 792-1885
Kansas Children’s Service League	(877) 530-5275
Kansas Commission on Veterans Affairs, Junction City	(785) 238-4522
Kansas Crisis Hotline, Manhattan	(785) 539-7935
Kansas Department for Children and Families, Manhattan www.dcf.ks.gov	(785) 776-4011
Kansas Elder Law Hotline.....	(888) 353-5337
Kansas Legal Services	(913) 621-0200
Long Term Care Ombudsman	(877) 662-8362
Operation Homefront (<i>Military Families</i>)	(877) 264-3968
Planned Parenthood, Wichita	(316) 263-7575
Saint Francis Ministries	(800) 423-1342
Social Security Administration, Manhattan	(877) 840-5741
Three Rivers Center for Independent Living (<i>helps people with disabilities</i>).....	(785) 777-2499
Urban League of Kansas	(316) 262-2463

Food

Abilene Area Food & Clothing Center, Abilene	(785) 263-1221
Bethel United Methodist, Longford (TEFAP)	(785) 388-2438
Catholic Charities Mobile Outreach, Abilene	(785) 263-0210
Catholic Charities, Salina	(785) 825-0208
Elk's Lodge, Clay Center (TEFAP)	(785) 632-0035
First UMC Waterville, Waterville	(785) 363-2779
First United Methodist Church, Manhattan	(785) 539-1748
Friendship Meals, Clay Center	(785) 632-5767
Kansas Food 4 Life, Great Bend	(620) 793-7100
Leonardville United Methodist Church, Leonardville	(785) 293-5855
Moms Meals Nourish Care www.momsmeals.com	(877) 508-6667
National Hunger Hotline	(866) 3-HUNGRY
Neighbors N Need, Wakefield (TEFAP)	(785) 761-3230
Ogden Community Center, Ogden	(785) 320-1046
Prairie Land Food, Manhattan	(800) 998-9436
Saint Paul's Episcopal Church, Clay Center	(785) 632-7030
Salina Emergency Aid/Food Bank, Salina	(785) 827-7111
Salina Rescue Mission, Salina	(785) 823-2610
Salvation Army, Manhattan	(785) 341-1254
Salvation Army, Salina	(785) 823-2251

Transportation

Clay County Public Transportation, Clay Center	(785) 632-2447
Disabled American Veterans (<i>VA appointments</i>)	(913) 651-2402
Med-A-Van, Salina (<i>to/from Salina</i>)	(785) 826-1583
OCCK Transportation, Salina	(855) 577-4337
Pawnee Mental Health Services, Manhattan	(785) 587-4333
Salina Emergency Aid/Food Bank, Salina	(785) 827-7111

Shelter

Homeless Shelters/Transitional Housing

American Red Cross, Leavenworth (<i>Veterans</i>).....	(913) 682-6222
Ashby House, Salina	(785) 826-4935
Homeless Veterans	(877) 223-8387
Homeless Shelter Hotline.....	(816) 474-4599
Hope Center, Abilene	(785) 263-4673
Manhattan Emergency Shelter, Manhattan	(785) 537-3113
Salina Rescue Mission, Salina	(785) 823-2610
The Open-Door Emergency Housing Shelter, Junction City	(785) 238-3599
U.S. Department of Veteran Affairs, VASH Voucher Program for Veterans	(877) 424-3838
VASH Voucher Program for Veterans.....	(620) 624-0280 x23

Rent & Utilities

Catholic Charities, Salina	(785) 825-0208
HOPE CENTER, Abilene	(785) 263-4673
Kansas Lifeline Program (<i>low-cost telephone service</i>).....	(800) 662-0027
Low Income Energy Assistance Program (LIEAP).....	(800) 432-0043
Salina Emergency Aid/Food Bank, Salina	(785) 827-7111
Salvation Army, Manhattan	(785) 539-9399
Salvation Army, Salina	(785) 823-2251
SAVE, Inc. (HIV/AIDS).....	(816) 531-8340
Shepherd's Crossing, Manhattan	(785) 776-1470
Riley County Public Housing Authority.....	(785) 776-9294
North Center Regional Planning Commission.....	(800) 432-0303
LIEAP, Salina	(785) 826-8000
VASH Voucher Program for Veterans.....	(620) 624-0280 x23

Landlord Issues

Housing and Credit Counseling (<i>Landlord and tenant issues</i>) www.hcci-ks.org	(800) 383-0217
Kansas Housing Resources Corporation www.kshousingcorp.org	(785) 217-2001
Kansas Legal Services	(800) 723-6953

Housing

Aging and Disability Resource Center (ADRC), Manhattan	(785) 776-9294
American Red Cross, Salina	(785) 827-3644

Clay Center Housing Authority, Clay Center	(785) 632-2100
Kansas Housing Assistance Program	www.kshap.org
Kansas Housing Resources Corporation (<i>includes weatherization assistance</i>)	(785) 217-2001
.....	www.kshousingcorp.org
Kansas Rural Development	(785) 271-2700
Salina Housing Authority, Salina	(785) 827-0441
U.S. Department of Veteran Affairs, VASH Voucher Program for Veterans	(877) 424-3838
Affordable Housing	www.affordablehousingonline.com

Other Resources

Kansas Commission on Disability Concerns..... (800) 295-5232
[Kansas Commission on Disability Concerns \(KCDC\)](#) Choose “Life Resources” or “Youth” at top of page.

Community Resource Guide



A quick guide to basic services available in **Ottawa County**, Kansas

Information is provided as a community service and does not necessarily constitute endorsement. This is not a complete list of resources; information is updated annually.

Medical

Local Health Services/Clinics

Ottawa County Health Center, Minneapolis	(785) 392-2122
Ottawa County Health Department, Minneapolis	(785) 392-2822
Pregnancy Service Center, Salina	(785) 823-1484
Salina Family Healthcare Center, Salina	(785) 825-7251

Mental Health

Central Kansas Mental Health Center, Minneapolis	(785) 823-6322
National Alliance on Mental Illness (NAMI)	(800) 539-2660
National Suicide Prevention Lifeline	(800) 273-8255
Saint Francis Ministries	(800) 423-1342
Salina Family Healthcare Center, Salina	(785) 825-7251

Help for Sexual and Domestic Violence (added 2/2022)

Kansas Coalition Against Sexual and Domestic Violence.....	(785) 232-9784
o Kansas Coalition Against Sexual and Domestic Violence (KCSDV)	
\Kansas Sexual and Domestic Violence Service Providers – Find Services Near You. Kansas Sexual and Domestic Violence Organizations – Find on Map Kansas Coalition Against Sexual and Domestic Violence (KCSDV)	
Safety Plan for Victims Safety Plan for Victims of Domestic Violence Kansas Coalition Against Sexual and Domestic Violence (KCSDV)	
Kansas Crisis Hotline	(888) 363-2287
National Domestic Violence Hotline	(800) 799-7233
.....	SMS: Text START to 88788

Dental Services

Affordable Dental Care, Minneapolis	(844) 536-0185
All Smiles Dental Care, Minneapolis	(785) 392-2194
Kansas Donated Dental Services Online Application.....	https://dentallifeline.org/kansas/
Kansas Donated Dental Services	(785) 273-1900 or (888) 870-2066
Kansas Mission of Mercy Dental Project	http://www.ksdentalfoundation.org/patients/
Kansas Neurological Institute, Topeka	(785) 296-5377
Kansas State Farmworker Health Program, Topeka	(785) 296-2671
Marian Dental Clinic, Topeka	(785) 233-2800
Salina Emergency Aid/Food Bank, Salina	(785) 827-7111
Salina Family Healthcare Center, Salina	(785) 826-9017
Smiles Change Lives (discounted braces)	https://www.smileschangelives.org/
Smiles for Success	https://smilesforsuccess.org/

Eye Care

Erin Smith Optometrist, Minneapolis	(785) 392-2126
Dr. Driver & Clark, Minneapolis	(785) 392-2126
EyeCare America	(877) 887-6327
Lions Club International (provides free eye exams and eyeglasses to qualified participants)	(316) 773-2100
Salvation Army, Salina	(785) 823-2251
Salvation Army, Topeka	(785) 233-9648
See To Learn (3 year-olds)	(800) 960-3937

Prescription Services

Needy Meds	www.needymeds.org
Prescription Assistance Program	www.KansasDrugCard.com
Rx Assist	www.rxassist.org
Salina Emergency Aid/Food Bank, Salina	(785) 827-7111
Salina Family Healthcare Center, Salina	(785) 452-3900

Assistive Equipment

Assistive Technology for Kansans	(800) 526-3648
KEE Reuse Program (supply or exchange medical equipment for adults and children)	(800) 526-3648

Other Health Services

KanCare/Medicaid eligibility and renewal, KanCare Clearinghouse	(800) 792-4884
KanCare application, benefits and assistance	www.kancare.ks.gov
KanCare Ombudsman office	(855) 643-8180
.....	https://www.kancare.ks.gov/kancare-ombudsman-office/contact-us
Kansas Special Health Care Needs (SHCN) Program (infants to age 21)	(785) 826-6600

Kansas State Farmworker Health Program, Topeka	(785) 296-2671
Ryan White Program (HIV/STI help) (www.kdheks.gov/sti_hiv/ryan_white_care.htm).....	(316) 293-2652
Senior Health Insurance Counseling for Kansas (SHICK)	(800) 860-5260

Information and Referral

Local Resources

American Red Cross, Salina	(785) 827-3644
Area Agency on Aging, Minneapolis	(785) 392-2822
Birthright	(800) 550-4900
Catholic Charities, Salina	(785) 825-0208
Disability Planning Organization of Kansas, Inc., Salina	(785) 823-3173
Planned Parenthood, Wichita	(316) 263-7575
Salina Emergency Aid/Food Bank, Salina	(785) 827-7111
Salina Rescue Mission, Salina	(785) 823-2610
Salvation Army, Salina	(785) 823-2251
United Way	2-1-1
United Way, Salina	(785) 827-1312

Regional/State Organizations

Aging and Disability Resource Center (ADRC), Manhattan	(785) 776-9294
Area Agency on Aging, Salina	(785) 823-1277
Disability Planning Organization of Kansas (DPOK), Salina	(785) 823-3173
Kansas Commission on Veterans Affairs, Salina	(785) 823-2862
Kansas Department for Children and Families, Salina (www.dcf.ks.gov)	(785) 826-8000
Kansas Elder Law Hotline	(888) 353-5337
Kansas Legal Services	(620) 225-4041
Long Term Care Ombudsman	(877) 662-8362
Operation Homefront (Military Families)	(877) 264-3968
Saint Francis Ministries	(800) 423-1342
Social Security Administration, Salina	(877) 405-3494
Urban League of Kansas	(316) 262-2463
West Central Missouri Community Action Agency	(800) 293-3532

Food

Golden Wheel Senior Center, Minneapolis	(785) 392-3338
Meals on Wheels, Minneapolis	(785) 392-3338
Ada Senior Center, Ada (TEFAP)	(785) 820-0108
Bennington Senior Center, Bennington	(785) 488-3893
Catholic Charities, Salina	(785) 825-0208
First Presbyterian Church, Delphos (TEFAP)	(785) 427-7589
National Hunger Hotline	(866) 3-HUNGRY
Salina Emergency Aid/Food Bank, Salina	(785) 827-7111
Salina Rescue Mission, Salina	(785) 823-2610
Saline County Salina Senior Center, Salina	(785) 827-9818
Salvation Army, Salina	(785) 823-2251
United Church of Bennington, Bennington (TEFAP)	(785) 488-3772
United Methodist Church, Tescott (TEFAP)	(785) 283-4340
VFW, Minneapolis (TEFAP)	(785) 392-2113
Yachad Food Pantry, Overland Park (Kosher).....	(913) 649-4852

Transportation

81 Connection, Salina	(785) 826-1583
Disabled American Veterans (VA appointments)	(913) 651-2402
OCCK Transportation (CityGo), Salina	(785) 826-1583
Ottawa County Transportation, Minneapolis	(785) 392-2822

Shelter

Homeless Shelters/Transitional Housing

Ashby House, Salina	(785) 826-4935
Homeless Shelter Hotline.....	(816) 474-4599
Salina Rescue Mission, Salina	(785) 823-2610
U.S. Department of Veteran Affairs, VASH Voucher Program for Veterans	(877) 424-3838

Rent & Utilities

Catholic Charities, Salina	(785) 825-0208
Kansas Community Action Partnership, Topeka	(785) 836-4500

Kansas Lifeline Program (low cost telephone service)..... (800) 662-0027
 Low Income Energy Assistance Program (LIEAP)..... (800) 432-0043
 Salina Emergency Aid/Food Bank, Salina (785) 827-7111
 Salvation Army, Salina (785) 823-2251

Landlord Issues

Housing and Credit Counseling (Landlord and tenant issues) (www.hcci-ks.org) (800) 383-0217
 Kansas Housing Resources Corporation (www.kshousingcorp.org) (785) 217-2001
 Kansas Legal Services (800) 723-6953
 Urban League of Kansas (316) 262-2463

Housing

American Red Cross, Salina (785) 827-3644
 Kansas Community Action Partnership, Topeka..... (785) 836-4500
 Kansas Housing Assistance Program www.kshap.org
 Kansas Housing Resources Corporation (includes weatherization assistance) (785) 217-2001
 www.kshousingcorp.org
 Kansas Rural Development (785) 271-2700
 Minneapolis Housing Authority, Minneapolis (785) 392-3272
 U.S. Department of Veteran Affairs, VASH Voucher Program for Veterans (877) 424-3838
 Urban League of Kansas (316) 262-2463

Community Resource Guide



A quick guide to basic services available in **Republic County**, Kansas

Information is provided as a community service and does not necessarily constitute endorsement. This is not a complete list of resources; information is updated annually. .

Medical

Local Health Services/Clinics

Republic County Health Department, Belleville	(785) 527-5671
Republic County Hospital, Belleville	(785) 527-2254
Republic County Emergency Room	(785) 527-2254
Republic County Family Physicians, Belleville	(785) 527-2237
Belleville Medical Clinic, Belleville	(785) 527-2217
Jewell County Hospital, Mankato	(785) 378-3137
Jewell County Health Department, Mankato	(785) 378-4060

Mental Health

Republic County Hospital, Belleville	(785) 527-2254
Kristal Stanton LPC, Belleville	(785) 346-6015
Pawnee Mental Health Services, Belleville	(785) 527-2549
Central Kansas Mental Health Center, Abilene	(785) 823-6322
Pawnee Mental Health Services, Mankato	(785) 378-3898
Konza Prairie Community Health Center, Junction City.....	(785) 238-4711\
National Alliance on Mental Illness (NAMI)	(800) 539-2660
National Suicide Prevention Lifeline	(800) 273-8255
Saint Francis Ministries	(800) 423-1342
National Suicide Prevention Lifeline	(800) 273-8255
Alcohol and Drug Abuse Helpline	(866) 645-8216
Substance Abuse Helpline (SAMHSA)	(800) 662-4357
Alcoholics Anonymous in Kansas	https://alcoholicsanonymous.com/aa-meetings/kansas/
Support groups in Kansas	https://supportgroupsinkansas.org/support-groups
Veteran’s Crisis Line	(800) 273-8244
Keys for Networking (for families with children with BH concerns)	(800) 499-8732

Updated 3/31/22

Mobile Crisis Helpline (for Kansans 0-20 yrs. old and foster care children, current and past)
 (833) 441-2240
 Kansas Ag Stress helpline (800) 447-1985

Help for Sexual and Domestic Violence (added 2/2022)

- Kansas Coalition Against Sexual and Domestic Violence (785) 232-9784
 - [Kansas Coalition Against Sexual and Domestic Violence \(KCSDV\)](#)
- Kansas Sexual and Domestic Violence Service Providers – Find Services Near You.
[Kansas Sexual and Domestic Violence Organizations – Find on Map | Kansas Coalition Against Sexual and Domestic Violence \(KCSDV\)](#)
- Safety Plan for Victims [Safety Plan for Victims of Domestic Violence | Kansas Coalition Against Sexual and Domestic Violence \(KCSDV\)](#)
- Kansas Crisis Hotline (888) 363-2287
- National Domestic Violence Hotline (800) 799-7233

Dental Services

Republic County Family Physicians, Belleville (785) 527-2237
 Fischer Family Dentistry, Belleville (785) 527-5602
 Bleeker John DDS, Belleville (785) 527-5683
 Konza Prairie Community Health Center, Junction City (785) 238-4711
 Konza Prairie Community Health Center, Manhattan (785) 320-7134
 Salina Emergency Aid/Food Bank, Salina (785) 827-7111
 Salina Family Healthcare Center, Salina (785) 826-9017
 Smiles Change Lives <https://www.smileschangelives.org/>
 Smiles for Success <https://smilesforsuccess.org/>
 Topeka Rescue Mission, Topeka (785) 354-1744

Eye Care

Main Street Vision Center, Belleville (785) 527-2965
 EyeCare America (877) 887-6327
 Lions Club International (316) 773-2100
 Salvation Army, Salina (785) 823-2251
 Salvation Army, Topeka (785) 233-9648
 See To Learn (3 year-olds) (800) 960-3937
 Kansas Dept. for Aging and Disability Services (Blind and Visually Impaired) (866) 213-9079
 Envision Vision Rehab Center, Wichita (316) 440-1600

Prescription Services

Needy

Meds.....www.needymeds.org

Prescription Assistance Program www.KansasDrugCard.com

Rx Assist www.rxassist.org

Salina Emergency Aid/Food Bank, Salina (785) 827-7111

Salina Family Healthcare Center, Salina (785) 452-3900

Shepherd's Crossing, Manhattan (785) 776-1470

Assistive Equipment

Assistive Technology for Kansans (800) 526-3648

KEE Reuse Program (supply or exchange medical equipment for adults and children) (800) 526-3648

K-Loan (620) 421-6554

Other Health Services

Community Care Network of Kansas www.communitycareks.org (785) 233-8483

<https://www.kancare.ks.gov/kancare-ombudsman-office/contact-us>.....

KanCare application, benefits and assistance

.....www.kancare.ks.gov

KanCare Ombudsman office..... (855) 643-8180

KanCare/Medicaid eligibility and renewal, KanCare Clearinghouse (800) 792-4884

Kansas Special Health Care Needs (SHCN) Program (785) 826-6600

Kansas State Farmworker Health Program, Topeka(785) 296-2671

Ryan White Program (HIV/STI help) (www.kdheks.gov/sti_hiv/ryan_white_care.htm).....(316) 293-2652

Senior Health Insurance Counseling for Kansas (SHICK) (800) 860-5260

Area Agency on Aging find the contact info for this county; See KCDC maps.

https://kcdcinfo.ks.gov/docs/default-source/maps/1-1-updated-kcdc-map-2-27-19.pdf?sfvrsn=c3accb67_0 p. 5

Medicare(800) 633-4227

Senior Health Insurance for Kansans (help with Medicare) find the contact info for this county; See KCDC maps.

https://kcdcinfo.ks.gov/docs/default-source/maps/1-1-updated-kcdc-map-2-2719.pdfsfvrsn=c3accb67_0 p. 24

Early Detection Works (for breast and cervical cancer issues) (877) 277-1368

Information and Referral

Local Resources

- Country Place Senior Living, Belleville (785) 527-5300
- American Red Cross, Fort Riley (Military, Veterans) (785) 239-1887
- American Red Cross, Manhattan (785) 537-4304
- American Red Cross, Salina (785) 827-3644
- Catholic Charities, Salina (785) 825-0208
- Golden Bell Haven Senior Citizen Center, Belleville (785) 527-5760
- Salina Emergency Aid/Food Bank, Salina (785) 827-7111
- Salina Rescue Mission, Salina (785) 823-2610
- Salvation Army, Manhattan (785) 539-9399
- Salvation Army, Salina (785) 823-2251
- United Way 2-1-1
- United Way, Manhattan (785) 776-3779
- United Way, Salina (785) 827-1312
- Parent Helpline (www.1800CHILDRENKS.org) (800) 244-6373
- Find local help and resources
- www.Findhelp.org
- 211 through United Way of the Plains (Central Kansas) (316) 267-1321
- Looking for help? United Way 211 can help. (unitedwayplains.org)
- Support groups in Kansas <https://supportgroupsinkansas.org/support-groups>

Regional/State Organizations

Aging and Disability Resource Center (ADRC), Manhattan.....	(785) 776-9294
Area Agency on Aging, Salina	(785) 823-1277
Birthright	(800) 550-4900
Disability Planning Organization of Kansas (DPOK), Salina	(785) 823-3173
Family Crisis Center Hotline, Great Bend	(620) 792-1885
Kansas Children’s Service League	(877) 530-5275
Kansas Commission on Veterans Affairs, Salina	(785) 823-2862
Kansas Crisis Hotline, Manhattan	(785) 539-7935
Kansas Department for Children and Families, Concordia (www.dcf.ks.gov)	(785) 243-4671
Kansas Elder Law Hotline.....	(888) 353-5337
Kansas Legal Services	(620) 225-4041
Long Term Care Ombudsman	(877) 662-8362
Operation Homefront (Military Families)	(877) 264-3968
Planned Parenthood, Wichita	(316) 263-7575
Saint Francis Ministries	(800) 423-1342
Social Security Administration, Salina	(877) 405-3494
Urban League of Kansas	(316) 262-2463

Food

Republic County Food Bank, Belleville	(785) 955-0086
Republic County Ministerial Association, Belleville (TEFAP)	(785) 527-0229
Jewell County Untd Methadist Office, Mankato	(785) 378-3830
Ministerial Association, Beloit	(785) 738-3071
Beloit First Christian Church, Beloit	(785) 738-3071
First United Methodist Church, Concordia	(785) 243-4560
Golden Bell Haven Senior Citizen Center, Belleville	(785) 527-5760
Kansas Food 4 Life, Great Bend	(620) 793-7100
Kansas Food Bank, Wichita	(316) 265-4421
Manna House of Prayer, Concordia	(785) 243-4428
National Hunger Hotline	(866) 3-HUNGRY
Prairie Land Food, Manhattan	(800) 998-9436
Republic County Food Bank, Belleville	(785) 955-0086
Republic County Ministerial Association, Belleville (TEFAP)	(785) 527-0229
Saint Paul’s Episcopal Church, Clay Center	(785) 632-7030
Salina Emergency Aid/Food Bank, Salina	(785) 827-7111
Salina Rescue Mission, Salina	(785) 823-2610

Salvation Army, Manhattan	(785) 341-1254
Salvation Army, Salina	(785) 823-2251
Salvation Army, Topeka	(785) 233-9648
Topeka Rescue Mission, Topeka	(785) 354-1744
Yachad Food Pantry, Overland Park (Kosher)	(913) 649-4852

Transportation

Disabled American Veterans (VA appointments).....	(913) 651-2402
Med-A-Van, Salina (to/from Salina)	(785) 826-1583
OCCK Transportation, Salina	(855) 577-4337
Republic County Transportation, Belleville	(785) 527-2235

This map may help in showing some transportation options by county; <https://kutc.ku.edu/map>

Shelter

Homeless Shelters/Transitional Housing

Ashby House, Salina	(785) 826-4935
Homeless Shelter Hotline	(816) 474-4599
Hope Center, Abilene	(785) 263-4673
Manhattan Emergency Shelter, Manhattan	(785) 537-3113
Salina Rescue Mission, Salina	(785) 823-2610
The Open Door Emergency Housing Shelter, Junction City	(785) 238-3599
U.S. Department of Veteran Affairs, VASH Voucher Program for Veterans	(877) 424-3838

Rent & Utilities

Catholic Charities, Salina.....	(785) 825-0208
Kansas Lifeline Program (low cost telephone service).....	(800) 662-0027
Low Income Energy Assistance Program (LIEAP).....	(800) 432-0043
Salina Emergency Aid/Food Bank, Salina	(785) 827-7111
Salvation Army, Manhattan	(785) 539-9399
Salvation Army, Salina	(785) 823-2251
SAVE, Inc. (HIV/AIDS)	(816) 531-8340
Shepherd’s Crossing, Manhattan	(785) 776-1470
Topeka Rescue Mission, Topeka	(785) 354-1744
U.S. Department of Veteran Affairs, VASH Voucher Program for Veterans	(877) 424-3838

Tenant Based Rental Assistance; check the listing to see if the county being researched in participating; <https://kshousingcorp.org/renters/tenant-based-rental-assistance/>

Weatherization Assistance (check the region for the county being researched; <https://kshousingcorp.org/homeowners/weatherization-assistance/>)

Landlord Issues

Housing and Credit Counseling (Landlord and tenant issues) (www.hcci-ks.org)	(800) 383-0217
Kansas Housing Resources Corporation (www.kshousingcorp.org)	(785) 217-2001
Kansas Legal Services	(800) 723-6953
Urban League of Kansas	(316) 262-2463

Housing

Belleville Housing Authority, Belleville	(785) 527-5730
Beloit Housing Authority, Beloit	(785) 738-5210
Aging and Disability Resource Center (ADRC), Manhattan	(785) 776-9294
American Red Cross, Salina	(785) 827-3644
Clay Center Housing Authority, Clay Center	(785) 632-2100
Concordia Housing Authority, Concordia	(785) 262-7510
Kansas Housing Assistance Program	www.kshap.org
Kansas Housing Resources Corporation (includes weatherization assistance)	(785) 217-2001 www.kshousingcorp.org
Kansas Rural Development	(785) 271-2700
Minneapolis Housing Authority, Minneapolis	(785) 392-3272
North Central Regional Planning Commission, Beloit (weatherization assistance)	(800) 432-0303
Northeast Kansas Community Action Program (NEKCAP), Hiawatha	(785) 742-2222
Salina Housing Authority, Salina	(785) 827-0441
U.S. Department of Veteran Affairs, VASH Voucher Program for Veterans	(877) 424-3838

Other Resources

Kansas Commission on Disability Concerns (800) 295-5232
[Kansas Commission on Disability Concerns \(KCDC\)](http://www.kcdc.org) Choose “Life Resources” or “Youth” at top of page.

FindHelp.org for many resources in your zip code area.

Salvation Army www.salvationarmyusa.org

Information and Resources for today’s challenging economy..... www.needhelp-payingbills.com

Community Resource



A quick guide to basic services available in **Washington County, Kansas**

Information is provided as a community service and does not necessarily constitute endorsement. This is not a complete list of resources; information is updated annually.

Medical

Local Health Services/Clinics

Washington County Public Health Department	(785) 325-2600
Washington County Hospital, Washington.....	(785) 325-2211
Washington Clinic, Washington.....	(785) 325-2240
Community Memorial Healthcare, Maryville.....	(785) 562-2311
Hanover Hospital, Hanover.....	(785) 337-2214
Jefferson Community Health And Life, Fairbury NE	(402) 729-3351
Clay County Medical Center, Clay Center... ..	(785) 632-2144

Mental Health And Substance Abuse Services

Pawnee Mental Health Services, Washington.....	(785) 325-3252
Pawnee Mental Health Services, Clay Center.....	(785) 632-2108
Blue Valley Behavioral Health, Fairbury	(402) 729-2272
Blue Valley Behavioral Health, Beatrice	(402) 228-3386
Washington County Hospital, Washington	(785) 325-2211
National Alliance On Mental Illness (NAMI)	(800) 539-2660
National Suicide Prevention Lifeline	(800) 273-8255
Alcohol And Drug Abuse Helpline	(866) 645-8216
Mobile Crisis Helpline <i>(for Kansans 0-20 yrs. old and foster care children, current and past)</i>	(833) 441-2240
Kansas Aging Stress helpline.....	(800) 447-1985
Substance Abuse Helpline (SAMHSA).....	(800) 662-4357
Alcoholics Anonymous in Kansas	https://alcoholicsanonymous.com/aa-meetings/kansas/
Support groups in Kansas.....	https://supportgroupsinkansas.org/support-groups

Help for Sexual and Domestic Violence (added 2/2022)

Kansas Coalition Against Sexual and Domestic Violence..... (785) 232-9784

[Kansas Coalition Against Sexual and Domestic Violence \(KCSDV\)](#)

Kansas Sexual and Domestic Violence Service Providers – Find Services Near You. [Kansas Sexual and Domestic Violence Organizations – Find on Map | Kansas Coalition Against Sexual and Domestic Violence \(KCSDV\)](#)

Safety Plan for Victims [Safety Plan for Victims of Domestic Violence | Kansas Coalition Against Sexual and Domestic Violence \(KCSDV\)](#)

Kansas Crisis Hotline..... (888) 363-2287
National Domestic Violence Hotline (800) 799-7233
..... SMS: Text START to 88788

Dental Services

Clay Center Family Dental Care, Clay Center (785) 632-3126
Maryville Dental Care, Maryville (785) 562-5529
Dental Associates Of Manhattan, Manhattan (785) 537-2651
Konza Prairie Community Health Center, Manhattan (785) 320-7134
Family & Implant Dentistry, Manhattan..... (785) 539-5949
Blue Rapids Dental Clinic, Blue Rapids..... (785) 363-7963
Warren Clinic, Hanover (785) 337-2214
Kansas Donated Dental Service..... (785) 273-1900 Or (888) 870-2066
Kansas Donated Dental Services Online Application.....<https://Dentallifeline.Org/Kansas/>
Smiles Change Lives (*Discounted Braces*)<https://www.Smileschangelives.Org/>
Smiles For Success<https://Smilesforsuccess.Org/>

Eye Care

Washington County Hospital, Washington (785)325-2211
Republic County Family Physicians, Belleville (785)527-2237
International Lions Club-Harper (*Provides Free Eye Exams And Eyeglasses To Qualified Participants*).....(620) 842-7064
Kansas Dept.Aging And Disability Services (*Blind And Visually Impaired*) (866) 213-9079
Vision USA (620) 231-4230
Eyecare America (877) 887-6327
See To Learn (3 Year-Olds) (800) 960-3937
Envision Vision Rehab Center, Wichita (316) 440-1600

Prescription Services

Prescription Assistance Program.....www.Kansasdrugcard.com
Needy Meds (Helps With Cost Of Medicine)www.Needymeds.Org
Rx Assist.....www.Rxassist.Org

Other Health Services

Kancare/Medicaid Eligibility And Renewal, Kancare Clearinghouse (800) 792-4884
Kancare Application, Benefits And Assistance.....www.Kancare.Ks.Gov
Kancare Ombudsman Office, Help With Problems And Questions (855) 643-8180

- Area Agency On Aging Find The Contact Info North East Hiawatha (785)742-7152
- Senior Health Insurance For Kansans, Brad Kirmer.....(620) 342-2505 Ext.226
- (800)883-2549
- Medicare..... (800) 633-4227
- Early Detection Works (For Breast And Cervical Cancer Issues)..... (877) 277-1368
- Ryan White Outreach Program (*HIV/STI Help*),Manhattan.....(785)776-4779
- Community Care Network Of Kansas www.Communitycareks.org (785) 233-8483
- Kansas Special Health Care Needs (SHCN) Program (*Infants To Age 21*)..... (785) 826-6600
- Kansas State Farmworker Health Program, Topeka (785) 296-2671

Assistive Equipment

- Three Rivers Center for Independent Living (*helps people with disabilities*)..... (785) 777-2499
- Assistive Technology For Kansans..... (800) 526-3648
- Kansas Equipment Exchange (Supply Or Exchange Medical Equipment)..... (800) 526-3648
- K-Loan..... (620) 421-6554

Information And Referral

Local Resources

- Washington County Resources.....<http://www.washingtoncountyks.gov/government/state-federal-local-resources/>
- Three Rivers Center for Independent Living (*helps people with disabilities*)(785) 777-2499
- American Legion<https://www.legion.org/>
- Parent Helpline (www.1800CHILDRENKS.org)(800) 244-63731
- Find local help and resources.....www.findhelp.org
- 211 through United Way of the Plains Central Kansas.....(316) 267-1321
-[Looking for help? United Way 211 can help. \(unitedwayplains.org\)](http://www.unitedwayplains.org)
- Support groups in Kansas.....<https://supportgroupsinkansas.org/support-groups>

Regional/State Organizations

- Three Rivers Center for Independent Living (*helps people with disabilities*) (785) 456-9915
- DCF Office West Region , Manhattan (785)776-4011
- Services For Blind Or Visually Impaired Hutchinson (Tammy Fuhr)..... (620)663-3989
- Kansas City (Denise Younger) (816)237-2051
- Community Developmental Disability Org Twin Valley Developmental (785)747-2251
- Area Agency On Aging Northeast, Hiawatha (785)742-7152
- Long Term Care Ombudsman Region 2, Sue Schuster (785)230-0715

Aging And Disability Resource Center Northeast ADRC	(785)742-7152
Kansas Legal Services, Seneca	(785)336-6016
Kansas Legal Services, Manhattan	(785)537-2943
Kansas Commission On Veteran's Affairs, Junction City	(785)238-4522
Social Security, Manhattan	(877)840-5741
Elder Hotline (Legal Assistance For Elders).....	(888) 353-5337
Twin Valley Developmental Services Inc.....	(785) 573-5502
Disability Rights Center	(785) 273-9661
Veterans Program, Topeka.....	(785)235-5627
Families Together.....	(785)233-4777

Food

Washington Christian Church, Washington	(785)325-3225
Washington United Methodist , Washington.....	(785)325-2158
Republic County Good Bank And Job Bank, Belleville	(785)955-0086
Waverly United Methodist Church	(785)363-2467
United Methodist Church, Maryville	(785)562-2621
Salem's Evangelical Lutheran Church, Axtell	(785)736-2810
Immanuel Lutheran Church, Linn	(785) 348-5892
Moms Meals Nourish Care www.Momsmeals.Com	(877) 508-6667

Transportation

Pawnee Mental Health Services Manhattan (Disabled).....	(785)587-4333
Twin Valley Developmental Services (Elderly, Disabled)	(785)747-2251

Shelter

Homeless Shelters/Transitional Housing

Neighbor To Neighbor, Concordia	(785)262-4215
Catholic Charites, Washington	(785)243-4167
Wymore United Methodist Church, Wymore NE	(402)645-3470
Fairbury United Methodist Church, Fairbury NE	(402)729-2247
United Methodist Church, Leonardville	(785)293-5855
Homeless Veterans	(877) 223-8387
VASH Voucher Program For Veterans.....	(620) 624-0280 X23